



PROMOTING
SUSTAINABLE
AGRICULTURE

 PURCHASING GUIDE

AMAGGI 

VERSION 2 - AUGUST/2023

WHO IS AMAGGI?

AMAGGI operates in four business areas - Logistics and Operations, Agro, Commodities and Energy - and is present, in an integrated and synergistic manner, in all stages of the agribusiness production chain, from the production of soybean, corn, cotton, soybean seeds and inputs, to their processing and trading. AMAGGI also generates renewable energy, operates ports and performs water and road transportation.

In the social field, the **André and Lucia Maggi Foundation** is responsible for managing the Company's Private Social Investment Policy. The Foundation supports the communities where the company operates with social, environmental and cultural projects of public interest, with the aim of contributing to the development of these sites.

MISSION

To contribute to the development of agribusiness, by adding value, respecting the environment and improving life in the communities.

VISION

To be a reference in sustainable development.

FOREST 500

Global Leader in actions Against deforestation among 500 companies worldwide for consistency between public commitments and measures put into practices.



CDP

The World's Only soy trader and producer on the CDP Forest "A-" List.



MORE INTEGRITY

Among the 8 Brazilian companies, which have received the seal of renewal from the Ministry of Agriculture and Food Supplies (MAPA) for its Compliance and Integrity Program.

AMAGGI'S ESG COMMITMENTS

NO DEFORESTATION AND NO NATIVE VEGETATION CONVERSION

This commitment covers agricultural production, origination and financing of grain production, considering direct, intermediate and indirect suppliers, regardless of the legality of the area opening. AMAGGI is also committed to maintaining all the setorial agreements to which it is a signatory for the protection of forests and native vegetation, including the **Soy Moratorium** (not to trade soybeans from areas deforested after 2008) and **Pará Green Protocol for Grains**, as well as supporting process improvement.

NET ZERO EMISSIONS

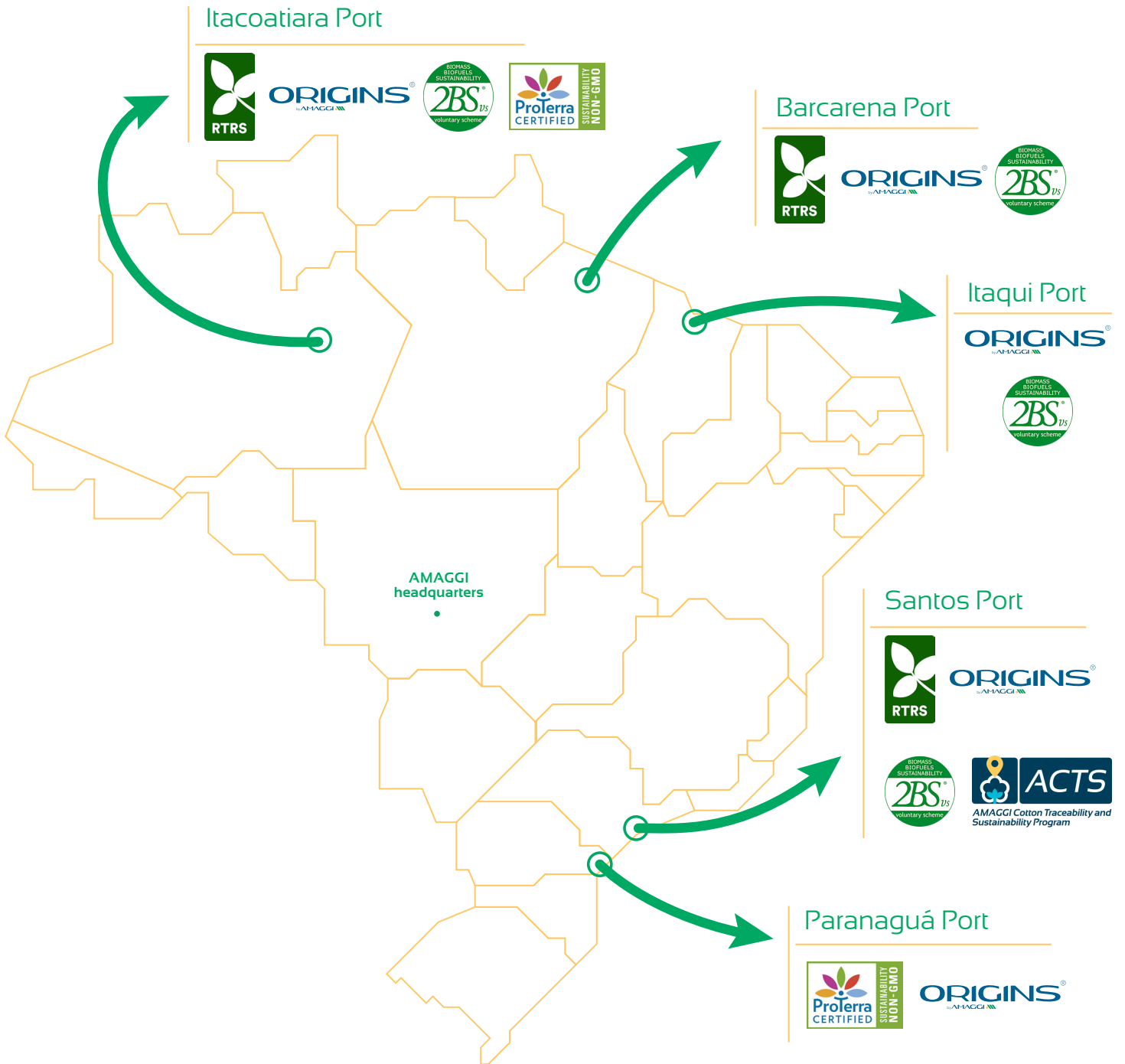
Achieving net zero emissions by 2050 while committed to the Science Based Targets initiative (SBTi) through strategies to decarbonize by 2035 and neutralize possible residual emissions, especially through the promotion of regenerative, low carbon agriculture that's capable of protecting biodiversity."

SOCIO-ENVIRONMENTAL CRITERIAS

AMAGGI assesses 100% of its grain suppliers based on social and environmental criteria, aiming at the environmental protection and respect to human rights, and does not trade grain that comes from:

- Production areas that are liable to embargoes by IBAMA and state environmental agencies;
- Indigenous lands or Full Protection Conservation Units;
- Areas of the Amazon biome that were deforested after 2008, thus not complying with the Soy Moratorium;
- Areas that don't comply with Para's Green Grain Protocol;
- Producers that are in the 'Dirty List' of Slave Labor.

AMAGGI EXPORTS ITS PRODUCTS BY THE FOLLOWING PORTS IN BRAZIL



For other route suggestion or demand, contact us.

CERTIFICATIONS



Products

Soy and corn grains, as well as their by-products, such as bran, hull and oil.

Principles and Criteria



Guarantee of grains origin and its products.



Deforestation and Conversion Free (after January 2020).
*More restrictive cut-off dates may be applied on demand.



Carbon Stock Computation.



Analysis made using farm limits (polygon) and not just coordinates.



Compliance with socioenvironmental criteria.



100% scalable through technology solution using ORIGIR 2.0, AMAGGI's exclusive geospatial tool.



Audit guaranteed by a 3rd party.



FEFAC Soy Sourcing Guidelines approved.

Highlights

- Trading via Area Mass Balance (physical material).
- Standard developed by AMAGGI and verified by a third party.

Learn more: www.standardsmap.org/en/factsheet/98759/overview

OTHER CERTIFICATIONS



Modalities

Book and Claim (Credits).
Mass Balance EU RED (Physical).

Products

Soybean, Soybean meal, soybean oil, hulls.

Learn more:
www.responsiblesoy.org/?lang=en



Modalities

Mass Balance RED II (Physical).

Products

Soybean, Soybean meal, soybean oil, hulls and corn.

Learn more:
www.2bsvs.org/lg_en



Modalities

Segregation Non-GMO (Physical).

Products

Soybean, Soybean meal, soybean oil and hulls.

Learn more:
www.proterrafoundation.org



Modalities

Segregation (Physical).

Products

Cotton lint and cottonseed.

Learn more:
www.amaggi.com/acts/

COMPARE CERTIFICATIONS

ORIGINS[®]
STANDARD

ORIGINS[®]
FIELD



	ORIGINS [®] STANDARD	ORIGINS [®] FIELD	RTRS	2BS [®] voluntary scheme	Proterra CERTIFIED NON-GMO	ACTS AMAGGI Cotton Traceability and Sustainability Program
TRACEABILITY AT FARM LEVEL	✓	✓	✓	✓	✓	✓
DEFORESTATION AND CONVERSION FREE (DCF)	✓	✓	✓	✓	✓	✓
CARBON STOCK CALCULATION	✓	✓				
CARBON FOOTPRINT (CO ₂ CALCULATION FROM FARM TO PORT/FINAL DESTINATION)	IN IMPLEMENTATION	IN IMPLEMENTATION	✓	✓		
LAND AND PROPERTY RIGHT		✓	✓	✓	✓	✓
THIRD PARTY VERIFICATION	✓	✓	✓	✓	✓	✓
LEGAL COMPLIANCE		✓	✓	✓	✓	✓
RESPONSIBLE LABOUR CONDITIONS		✓	✓	✓	✓	✓
RESPONSIBLE COMMUNITY RELATIONS		✓	✓	✓	✓	✓
ENVIRONMENTAL RESPONSIBILITY	✓	✓	✓	✓	✓	✓
GOOD AGRICULTURE PRACTICES		✓	✓	✓	✓	✓
GREENHOUSE GAS EMISSIONS SAVINGS		✓	✓	✓	✓	
FIELD INSPECTION		✓	✓			
INTERNAL AUDIT		✓	✓			
100% BCI CERTIFIED						✓
100% RENEWABLE ENERGY IN PRODUCTION						✓
GMO-FREE (NON GENETICALLY MODIFIED ORGANISMS)					✓	
BLOCKCHAIN	IN FEASIBILITY STUDY	IN FEASIBILITY STUDY				
NO-MIXING OR SEGREGATED STANDARD	IN FEASIBILITY STUDY	IN FEASIBILITY STUDY			✓	
CUSTOMIZATION (CUT-OFF DATE, REGION AND OTHERS)	✓	✓				



MORE INFORMATION

To learn more about our Policies, Global Sustainability Positioning, Sustainability Report

and other actions developed by AMAGGI, please access:
www.amaggi.com.br/en/esg-strategy/

Or send an e-mail to
sustentabilidade@amaggi.com.br
vendas@amaggi.com.br



AMAGGI. 